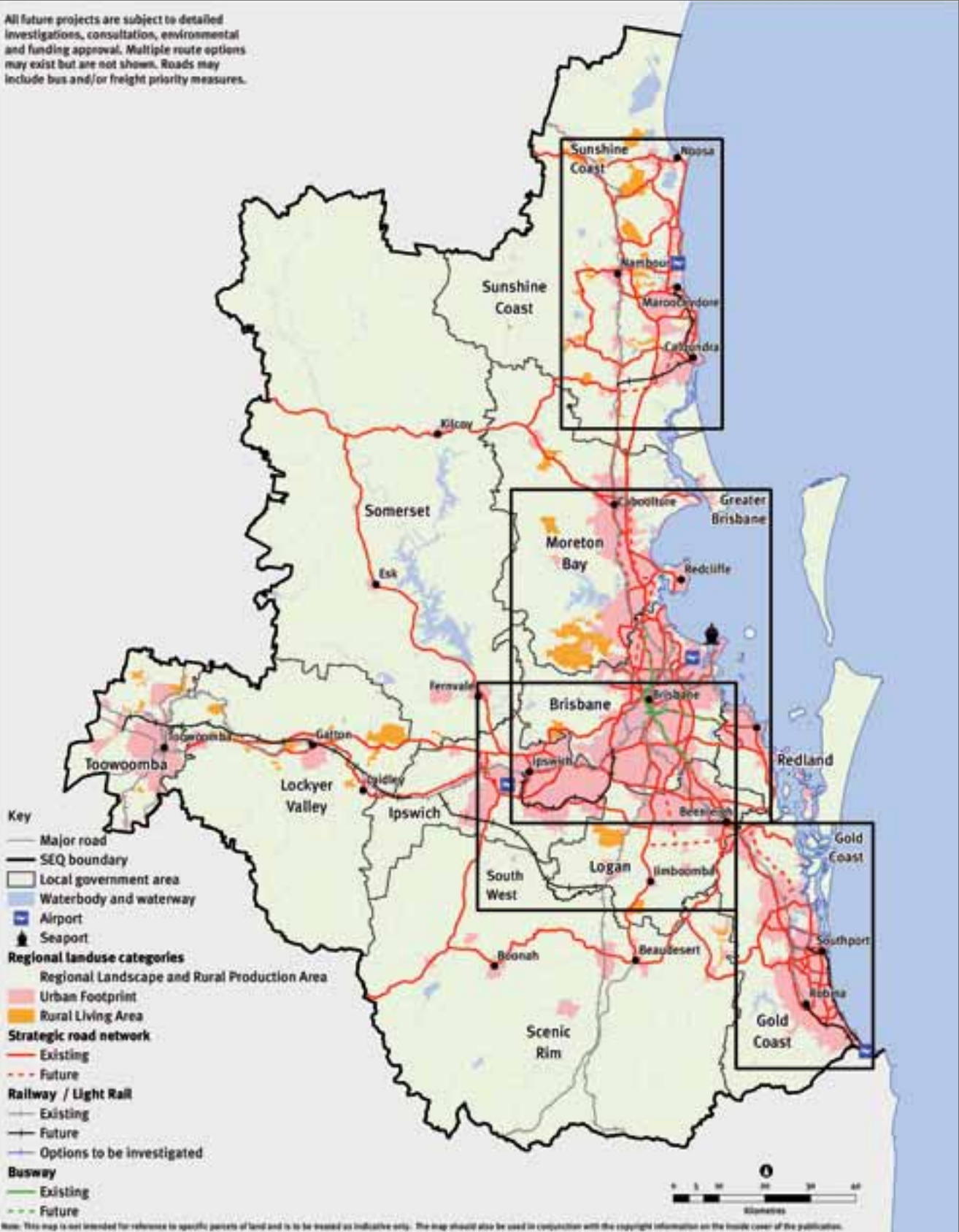


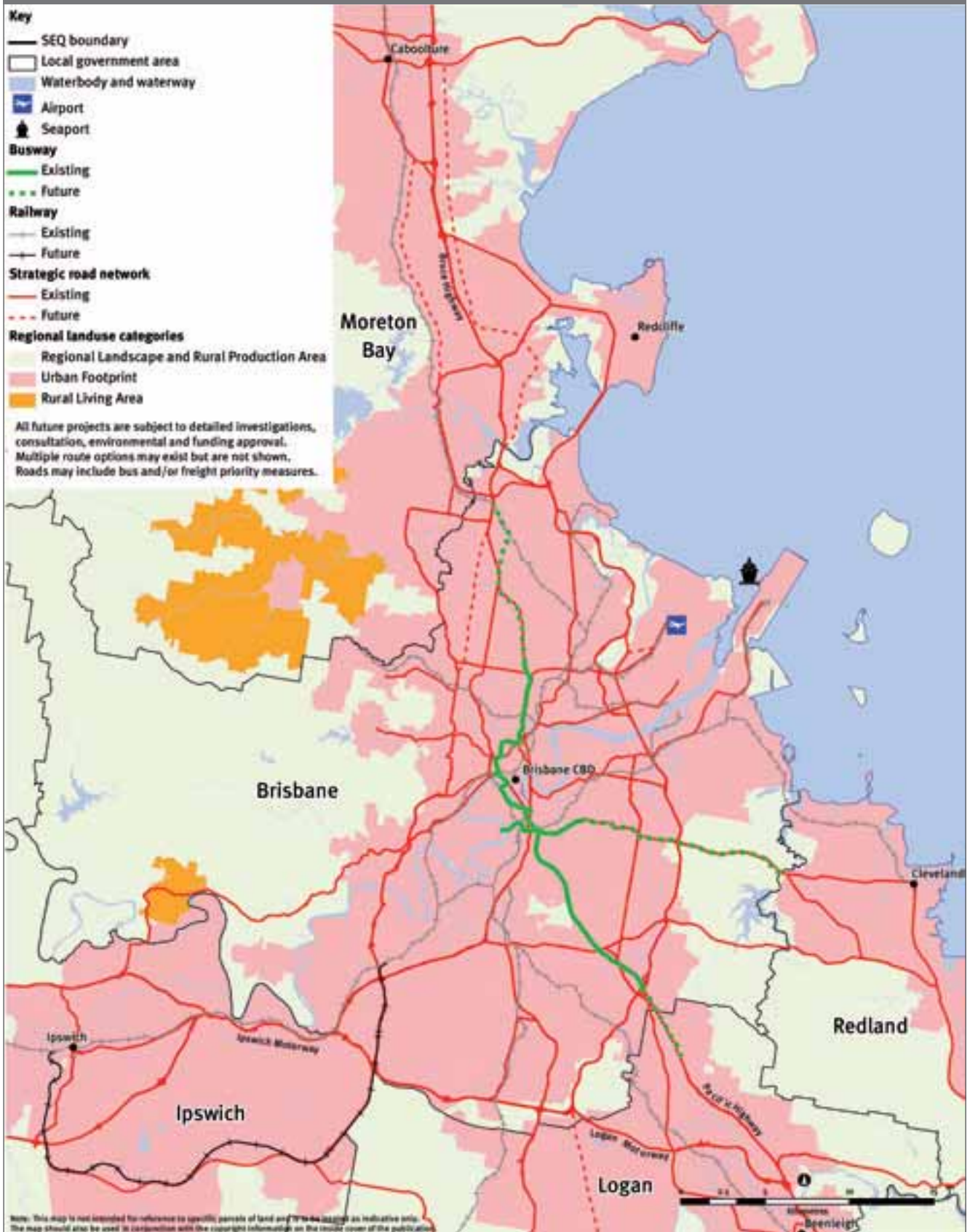


Map 21: Strategic transport network 2031

All future projects are subject to detailed investigations, consultation, environmental and funding approval. Multiple route options may exist but are not shown. Roads may include bus and/or freight priority measures.

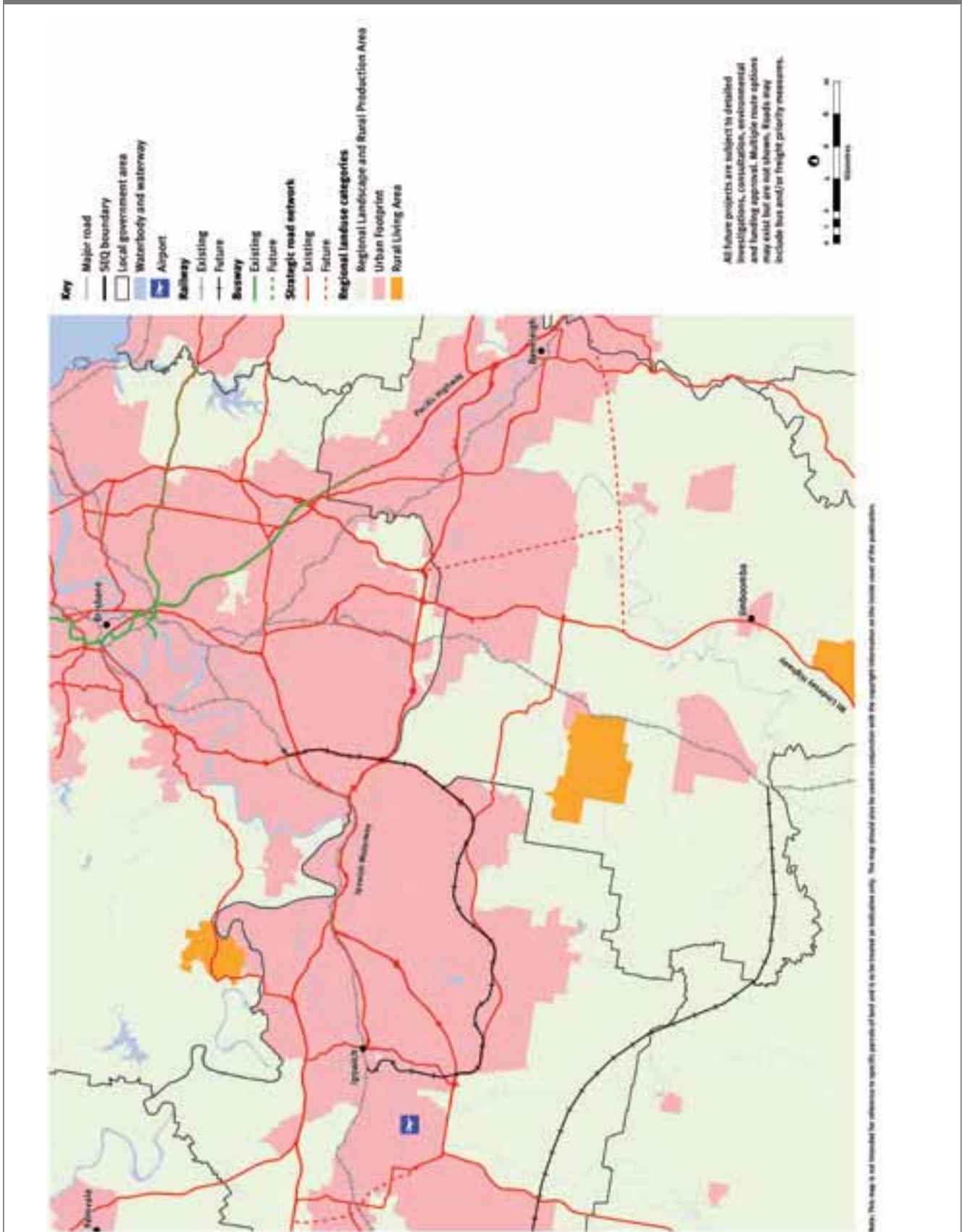


Map 22: Strategic transport network 2031—Greater Brisbane and the Western Corridor

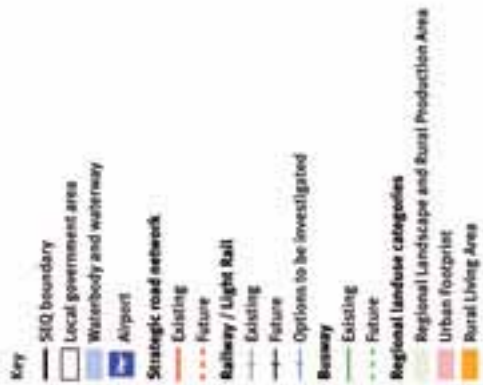




Map 23: Strategic transport network 2031—South West



Map 24: Strategic transport network 2031—Sunshine Coast and Gold Coast



Key

- SIQ boundary
- Local government area
- Waterbody and waterway
- ✈ Airport
- Strategic road network**
 - Existing
 - - - Future
- Railway / Light Rail**
 - Existing
 - - - Future
- Options to be investigated
- Boundary**
 - Existing
 - - - Future
- Regional landscape categories**
 - Urban Footprint
 - Rural Living Area

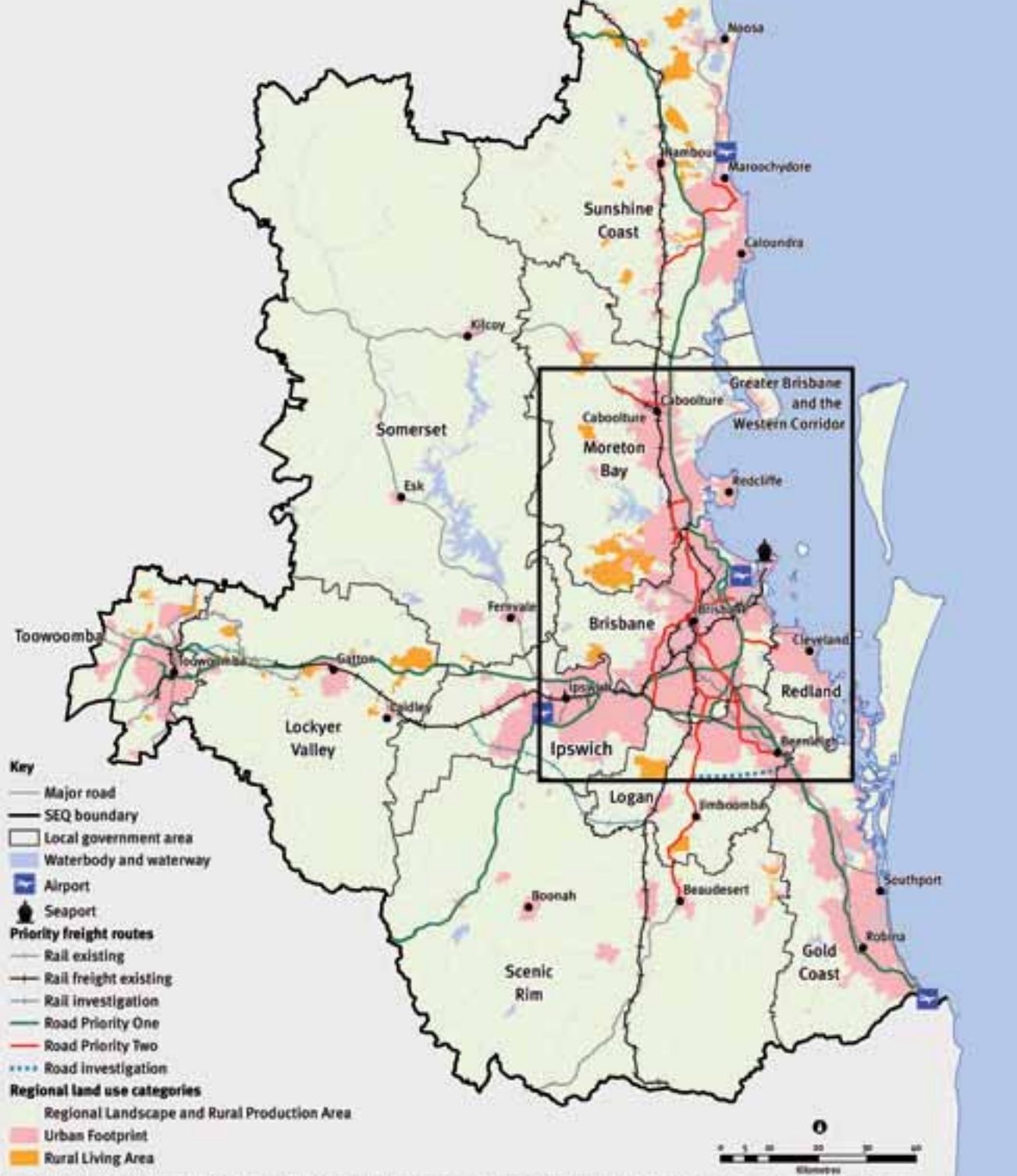
All future projects are subject to detailed investigations, consultation, environmental and funding approval. Multiple route options may exist. Roads may include bus and/or freight priority measures.

Note: This map is not intended for reference to specific parcels of land and is to be treated as indicative only. The map should also be used in conjunction with the copyright information on the inside cover of this publication.



Map 25: Priority freight routes

All future projects are subject to detailed investigations, consultation, environmental and funding approval. Multiple route options may exist but are not shown. Roads may include bus and/or freight priority measures.



Note: This map is not intended for reference to specific parcels of land and is to be treated as indicative only. The map should also be used in conjunction with the copyright information on the inside cover of the publication.

Map 26: Priority freight routes—Greater Brisbane and the Western Corridor

